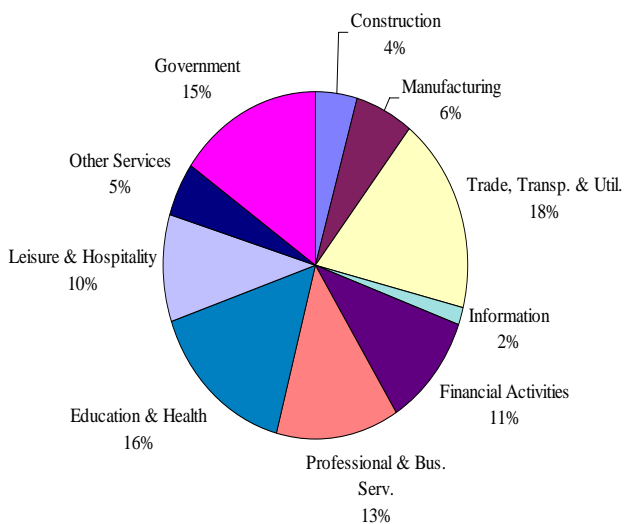


Delaware Employment Trends

- In June 2010, seasonally adjusted nonfarm employment was 417,800, up from 417,000 in May 2010. The over-the-month increase of 800 jobs was mainly due to increases in Leisure and Hospitality.
- Since June 2009, Delaware's total nonfarm jobs have increased by a net gain of +2,000, a rise of 0.5%. Nationally, the loss in jobs during that period was -0.1%. Over the past twelve months, the job gains in Delaware were in Government at +2,000, Education and Health at +1,300, and Leisure and Hospitality at +1,200. The largest over-the-year job losses were in Construction at -1,700, and Manufacturing at -1,600.

CONTACT: George Sharpley (302)761-8060

Percent Distribution of Delaware Nonfarm Employment—June 2010



DELAWARE DEPARTMENT OF LABOR
 Occupational and Labor Market Information
 Post Office Box 9965
 Wilmington, DE 19809-0965
 (302)761-8069
 www.oolmi.net
 60-01-200

OFFICIAL BUSINESS
 PENALTY FOR PRIVATE USE \$300

ATTENTION:
 If your address has changed, please return this section (with corrections noted) to the above address. Thank you.

**D
 E
 L
 A
 W
 A
 R
 E**

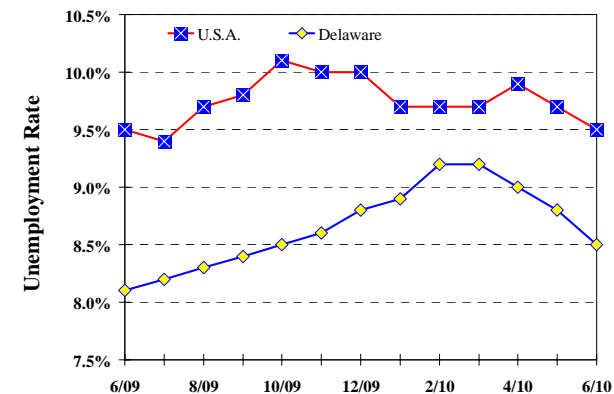
Monthly Labor Review

June 2010

Delaware
 Department
 of Labor
 John J. McMahon, Jr.,
 Secretary

Unemployment Rate Delaware and U.S.A.

June 2009 - June 2010



Please Visit Our Website at: www.oolmi.net

Delaware Labor Force Trends

- Delaware's seasonally adjusted unemployment rate in June 2010 was 8.5%, down from 8.8% in May 2010. There were 36,300 unemployed Delawareans in June 2010 compared to 35,200 in June 2009. The U.S. unemployment rate was 9.5% in June 2010 down from 9.7% in May 2010. In June 2009, the U.S. unemployment rate was 9.5%.

Delaware Civilian Labor Force

	June 2010	May 2010	June 2009
Civilian Labor Force	424,800	426,100	435,800
Employment	388,500	388,800	400,600
Unemployment	36,300	37,300	35,200
Unemployment Rate %	8.5	8.8	8.1
U.S. Unemployment Rate %	9.5	9.7	9.5

Source: Delaware Dept. of Labor in cooperation with the U.S. Dept. of Labor, Bureau of Labor Statistics.

Area Unemployment Rates (%)

	June 2010	May 2010	June 2009
New Castle County	9.0	8.3	8.7
Wilmington	12.3	11.5	12.2
Newark	8.8	7.0	8.0
Kent County	8.8	8.1	8.5
Dover	10.3	9.4	9.8
Sussex County	8.0	7.7	7.5

Note: Area rates are not seasonally adjusted

Source: Delaware Dept. of Labor in cooperation with the U.S. Dept. of Labor, Bureau of Labor Statistics.

Delaware Nonfarm Employment— Seasonally Adjusted (in 000s)

June 2009—June 2010

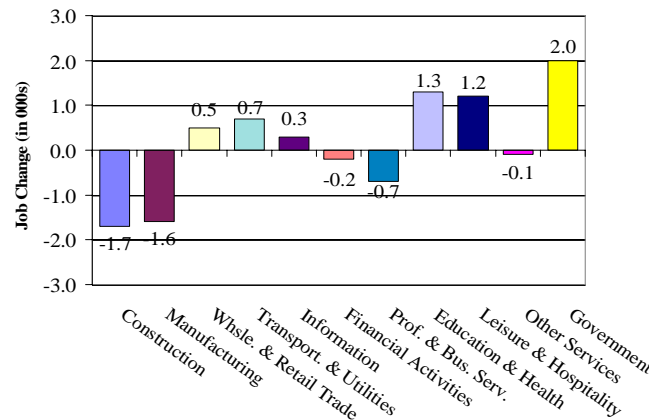
INDUSTRY GROUP	June		June 2009	Net change to	
	2010	2010		June '10 from: May 10	June 09
TOTAL NONAG. EMP.	417.8	417.0	415.8	0.8	2.0
CONSTRUCTION	18.2	18.6	19.9	-0.4	-1.7
MANUFACTURING *	26.3	25.8	27.9	0.5	-1.6
Durable Goods *	9.7	9.5	9.9	0.2	-0.2
Nondurable Goods *	16.6	16.3	18.0	0.3	-1.4
TRADE, TRANSP., & UTIL.	76.3	76.0	75.1	0.3	1.2
Wholesale Trade	13.1	13.3	13.2	-0.2	-0.1
Retail Trade	50.2	49.7	49.6	0.5	0.6
Transp. & Utilities	13.0	13.0	12.3	0.0	0.7
INFORMATION *	6.8	6.8	6.5	0.0	0.3
FINANCIAL ACTIVITIES	43.9	43.5	44.1	0.4	-0.2
PROF. & BUS. SERV.	55.2	55.8	55.9	-0.6	-0.7
EDUCATION & HEALTH	64.8	65.1	63.5	-0.3	1.3
LEISURE & HOSPITALITY	42.3	41.7	41.1	0.6	1.2
OTHER SERVICES	20.0	19.8	20.1	0.2	-0.1
GOVERNMENT	64.2	63.7	62.2	0.5	2.0
Federal Government *	6.5	6.9	5.7	-0.4	0.8
State Government	32.1	31.6	31.6	0.5	0.5
Local Government	25.4	25.1	25.0	0.3	0.4

*Industries are not seasonally adjusted.

Details may not add up due to rounding and seasonal adjustment.

Source: Delaware Dept. of Labor in cooperation with the U.S. Dept. of Labor, Bureau of Labor Statistics.

Delaware Over-The-Year Job Change June 2009—June 2010



Consumer Price Index All Urban Consumers

Percent Change to
June 2010 from:

	June 2009	Apr. 2010	May 2010
U.S. City Average	1.1	0.0	-0.1
Phila.-Wilm.-Atlantic City*	1.9	0.3	NA

* Data are published on a bi-monthly basis.

Hours & Earnings All Employee (Total Private)

	June 2010	May 2010	June 2009
Weekly Earnings	\$732.24	\$753.39	\$703.89
Weekly Hours	32.3	33.0	32.8
Hourly Earnings	\$ 22.67	\$ 22.83	\$ 21.46

Source: Delaware Dept. of Labor in cooperation with the U.S. Dept. of Labor, Bureau of Labor Statistics.

Delaware Annual Net Job Change 1992 to 2009

